

## Project References

Overseas
FPSO MV23, MV24, MV26, MV27, MV29, MV30, MV31, MV32, MV33, MV34 PROJECT
BAROSSA FPSO PROJECT
LIZA UNITY FPSO EPCI PROJECT
LIZA PROSPERITY FPSO PROJECT
FPSO SEPETIBA (MERO 2) PROJECT
FPSO ALMIRANTE TAMANDARÉ PROJECT
SHELL WHALE PROJECT
EPCI OF G1-61 FIELD PROJECT
FPSO PIONEIRO DE LIBRA PROJECT
CIDADE DE SAQUAREMA PROJECT
SHELL PRELUDE FLNG PROJECT
PETRONAS FLNG 1& FLNG2 PROJECT
ANNA NERY FPSO-MARLIM FIELDS DEVELOPMENT PROJECT
SHELL VITO PROJECT
SHELL PENGUIN PROJECT
ENI ANGOLA BLOCK 15/06 EAST HUB FPSO PROJECT
EPC FOR NORTH FIELD PRODUCTION SUSTAINABILITY OFFSHORE PROJECT
GALLAF 3 (AL SHAHEEN FIELD DEVELOPMENT) PROJECT
ZAWTIKA DEVELOPMENT PROJECT

China Domestic
LUFENG 12-3 FPSO PROJECT
LINGSHUI 17-2 PROJECT
JINZHOU 31-1 PROJECT
CNOOC LVDA 5-2 PROJECT
CNOOC DONGFANG 1-1 OIL FIELD PROJECT
OFFSHORE OIL 163 PLATFORM PROJECT

**NW NEWAY**  
NEWAY VALVE (SUZHOU) CO., LTD.

No.666 Taishan Road, Suzhou New District, P.R. China  
Post Code:215129  
Tel:86-512-666-15637  
Fax: 86-512-666-18930-2102  
E-mail: overseas.sales@neway.com.cn  
<https://www.newayvalve.com>  
 Neway Valve

## Offshore System



## Neway Offshore Valve

- ALMIRANTE TAMANDARE PROJECT
- FPSO ANITA GARIBALDI MV33 PROJECT



- EQUINOR BACALHAU PROJECT
- LIZA PROSPERITY FPSO PROJECT



- FPSO SEPETIBA (MERO 2) PROJECT
- ANNA NERY FPSO (CHARTER HIRING)-MARLIM 2 PROJECT

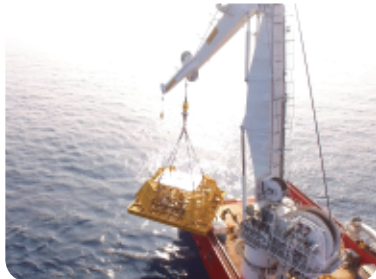


## Application

Neway is a primary manufacturer of valves for offshore topside systems including Platforms, FPSO, and FLNG. Because of the severe operational conditions (corrosive environment, high pressure, salty air & water, deep water etc.), valves being used for offshore topside systems should be specially designed and manufactured with anti-corrosive material, sealing and paint.

### ■ Offshore Wind Farm Power

**Topside systems:**  
Seawater distribution  
Seawater lift pumps  
Seawater return  
Diesel system  
Cooling medium coolers  
Cooling medium distribution  
Cooling medium expansion tank  
Oily water open drain system

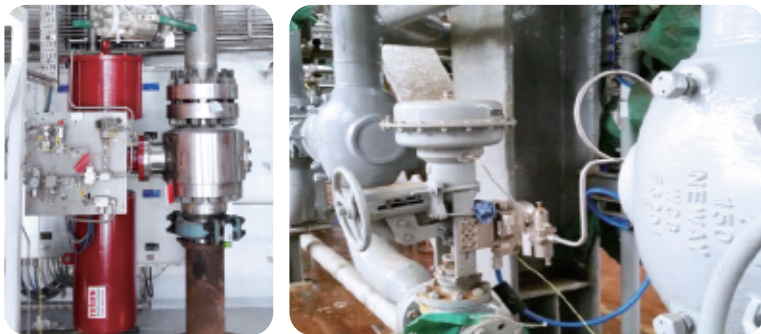


### ■ Subsea Application

**Features:**  
External pressure  
Corrosive seawater  
Difficult access  
Complex surroundings etc.

### ■ FPSO Topside Systems

Topside module(Production facility)  
Hull(Storage tanks)  
Mooring system( lines, flowlines)  
Offloading facility



# Offshore

As a well-known international industrial valve manufacturer, Neway is dedicated to the production and R&D of industrial valves. Neway is committed to providing complete industrial valve solutions to all industries through advanced engineering and innovation.

<https://www.newayvalve.com>

**NW NEWAY**



Product Range

Gate / Globe / Check Valve					
Size(IN)	Pressure Range(CLASS)	End Connection	Temperature Range	Operation	Structral Style
1/2" - 48"	150 - 4500	RF/ RTJ/ BW/ SW/ NPT/ HUB	-196°C - 650°C	Manual/ Motor Pneumatic/ Hydraulic	T-Pattern Globe Y-Pattern Globe Swing Type OS&Y
<div><div><ul style="list-style-type: none"><li>Fugitive emission performance design</li><li>Y-pattern globe offering higher CV performance</li><li>Internally assembled hinge pin design, minimize external leakage points</li><li>Ball-like pin structure provide self-alignment, which ensure the stable sealing performance</li><li>Optimal flow design &amp; the maximum flow capacity by fluid analysis software simulation</li><li>Dedicated accurate and match grinding to guarantee the sealing performance in low temperature</li><li>Fire safe design</li></ul></div><div><ul style="list-style-type: none"><li>Integrated seat design for cryogenic globe valve and API 602 compact designed globe</li></ul></div></div>					

Check Valve(Piston Type)					
Size(IN)	Pressure Range(CLASS)	End Connection	Temperature Range	Operation	Structral Style
1/2" - 2"	150 - 2500	RF/ RTJ/ BW SW/ NPT	-196°C - 650°C	N/A	Piston/ Lifting Type
<div><ul style="list-style-type: none"><li>Integral closed die forged for flanged body</li><li>Body guided &amp; spring return disc structure, avoid operation jamming and vibration</li><li>To prolong the service life, the seal surface is made of cobalt-based alloy by weld overlay</li><li>Fire safe design</li></ul></div>					

Check Valve(Dual-plate Type)					
Size(IN)	Pressure Range(CLASS)	End Connection	Temperature Range	Operation	Structral Style
2" - 76"	150 - 2500	LUG/ RF/ Wafer RTJ/ HUB	-196°C - 650°C	N/A	Dual-plate Type
<div><div><ul style="list-style-type: none"><li>Short length, light weight and compact structure</li><li>Low flow resistance with desirable flow capacity, without water hammer</li><li>Retainerless design, no external leakage point</li></ul></div><div><ul style="list-style-type: none"><li>Superior sealing capability via specialized production process</li><li>Fire safe design</li></ul></div></div>					

Floating Ball Valve					
Size(IN)	Pressure Range(CLASS)	End Connection	Temperature Range	Operation	Structral Style
1/2" - 10"	150 - 2500	RF/ BW/ RTJ/ SW/ NPT	-196°C - 650°C	Manual/ Pneumatic	One piece type/ Side entry type
<div><div><ul style="list-style-type: none"><li>Fire-safe &amp; anti-static design</li><li>Blow-out proof stem</li><li>ISO 5211 top flange</li></ul></div><div><ul style="list-style-type: none"><li>Optional locking device</li><li>Optional fugitive emission design</li></ul></div></div>					

Trunnion Mounted Ball Valve					
Size(IN)	Pressure Range(CLASS)	End Connection	Temperature Range	Operation	Structral Style
2" - 60"	150 - 2500	RF/ RTJ/ BW/ HUB	-196°C - 650°C	Manual/Pneumatic/ Hydraulic	Top Entry/ Side Entry
<div><div><ul style="list-style-type: none"><li>Fire safe &amp; anti-static design</li><li>Blow-out proof stem</li><li>Double block and bleed</li><li>Cavity pressure self-relief</li><li>Emergency sealant injection</li></ul></div><div><ul style="list-style-type: none"><li>On-line maintenance can be achieved by top-entry series</li><li>Interchangeable between single piston effect and double piston effect seat</li><li>Optional locking device</li><li>Optional fugitive emission design</li></ul></div></div>					



DBB Valve (Manifold)					
Size(IN)	Pressure Range(CLASS)	End Connection	Temperature Range	Operation	Structral Style
1/2" - 3" 2" - 24"	150 - 2500 150 - 2500	RF/RTJ/HUB RF/RTJ/HUB	-46°C - 325°C -46°C - 325°C	Manual/Pneumatic/ Hydraulic	Floating/ Trunnion
<div><div><ul style="list-style-type: none"><li>Weight saving</li><li>Space saving</li></ul></div><div><ul style="list-style-type: none"><li>Minimized external leakage points</li><li>Installation efficiency improve</li></ul></div></div>					

Concentric Butterfly Valve					
Size(IN)	Pressure Range(CLASS)	End Connection	Temperature Range	Operation	Structral Style
2" - 72"	150	Lug/ RF/ Wafer	-35°C - 204°C	Manual/Pneumatic/ Hydraulic	Side Entry
<div><div><ul style="list-style-type: none"><li>No connect pin between disc and stem</li><li>Three-layer flange sealing design to avoid outside leakage</li></ul></div><div><ul style="list-style-type: none"><li>Anti-stem blow out</li><li>Bronze material optional</li></ul></div></div>					

Double Offset Butterfly Valve					
Size(IN)	Pressure Range(CLASS)	End Connection	Temperature Range	Operation	Structral Style
2" - 48"	150 - 600	Lug/ RF/ Wafer	-50°C - 200°C	Manual/Pneumatic/ Hydraulic	Side Entry
<div><div><ul style="list-style-type: none"><li>Bi-directional zero leakage</li><li>Low torque &amp; low friction</li></ul></div><div><ul style="list-style-type: none"><li>Easy to take out and replace the seat</li><li>Fire-safe seat optional</li></ul></div><div><ul style="list-style-type: none"><li>Bronze material optional</li></ul></div></div>					

Triple Offset Butterfly Valve					
Size(IN)	Pressure Range(CLASS)	End Connection	Temperature Range	Operation	Structral Style
3" - 120"	150 - 2500	Lug/ RF/ RTJ/ Wafer	-196°C - 650°C	Manual/Pneumatic/ Hydraulic	Top Entry/ Side Entry
<div><div><ul style="list-style-type: none"><li>No rubbing, longer life</li><li>Laminated seal ring and solid metal seal ring optional and interchangeable</li></ul></div><div><ul style="list-style-type: none"><li>Fire safe design</li><li>Torque seated to achieve higher grade seal performance</li><li>Easy Maintenance at site</li></ul></div></div>					

Subsea Gate Valve					
Size(IN)	Pressure Range(CLASS)	End Connection	Temperature Range	Operation	Structral Style
1" - 9"	900 & above	BW/RTJ	-46°C - 150°C	Hydraulic & ROV	Through Conduit Slab Gate
<div><ul style="list-style-type: none"><li>External seals to prevent seal water, even bolt hole</li><li>Reliable body and stem sealing, metal ring for body, lip-seal group or multiple sealing for stem seal</li><li>Material and welding qualification</li><li>Over 20 years design life without maintenance</li></ul></div>					

Subsea Ball Valve					
Size(IN)	Pressure Range(CLASS)	End Connection	Temperature Range	Operation	Structral Style
1/2" - 48"	150 - 2500	BW/RTJ	-46°C - 150°C	Hydraulic & ROV	Trunnion Mounted
<div><ul style="list-style-type: none"><li>External seals to prevent seal water, even bolt hole</li><li>Reliable body and stem sealing, metal ring for body, lip-seal group or multiple sealing for stem seal</li><li>Material and welding qualification</li><li>Over 20 years design life without maintenance</li></ul></div>					



Technical Features

Qualifications

- NORSOK qualified raw material and painting facility & procedure control
- Classification society, DNV/ABS/ BV/LR/RS, certified valve & material

Surface Consideration

- All outer sharp edges be rounded to a minimum radius of 2.5mm
- Outside small parts min. 316ss
- Marine atmosphere painting

Testing& Inspection

- Material pitting corrosion testing
- Intergranular corrosion testing
- HIC/SSC testing, when required
- Painting salinity/thickness/ adhesive force detection
- NDE

Applicable Structures

**Valve type:** Ball, Gate, Globe, Check, Butterfly  
**End Connection:** Flange, HUB, BW, SW, NPT  
**Temperature:** -196 - 650°C  
**Size& pressure:** 1/2 - 60" Class150 - 4500

- Lifting Lug and supporting leg
- Fire safe
- Anti-static
- Anti-blow out stem
- Soft seated and metal seated
- Fugitive emission

Certificates of Neway Offshore Valve

(including but not limited to the following certificates)

- Classification society, DNV/ABS/ BV/LR/RS, certified valve & material
- NORSOK qualified raw material and painting facility & procedure control
- Special Equipment Manufacturing License in China
- Fugitive Emission certificate
- CE, ATEX Certification for the European Union
- Fire-Safe Certificate

Complete Solutions for Industrial Valves

About Neway

Neway is a global valve manufacturer committed to the research/development, production, and sale of high-quality industrial valves. Our product scope includes Gate, Globe, Check, Ball, Butterfly, Nuclear, Control, Subsea, Safety valves and Well-Head equipment. Our valves are widely supplied to industries including Oil & Gas, Refining, Chemical/Petrochemical, Pipeline, LNG, On/Offshore Exploration & Production, Power, and Renewable/Green Energy applications. Neway's owned and vertically integrated R & D center, forging/casting plants, and production/assembly bases allow us to control all business processes to ensure a stable supply chain, rigorous quality control standards, and competitive pricing/delivery options. Approximately 3,500 employees all over the world strive to provide Neway's superior products and excellent service to our customers.

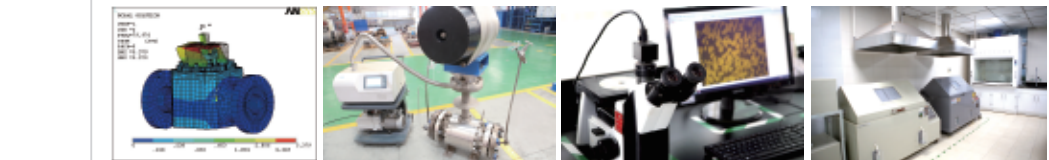
Neway Factory

Neway adopts the group multi-factory management model and has one major valve assembly plant in China with 230,000m² coverage , one API 6A valve plant, three casting foundries, one forging factory and new plant for Butterfly valve. Neway also has a joint venture factory in Saudi Arabia.



R&D

In order to meet the application requirements of valves in different fields, Neway applies advanced software (ANSYS, FE-SAFE, MathCAD, Autodesk Simulation CFD, Foxpro, NX, etc.) for product research and development, and has established professional material laboratory and special engineering test, which can simulate various extreme conditions and lay a solid foundation for the research and development of high-end valves.



Sales Network

Neway implements global marketing and sales strategy, has established sales companies and offices subordinate to China HQ globally, such as America, Netherlands, Italy, Singapore, UAE and Nigeria, and established strategic partnership with more than 80 overseas agents and distributors around the world.

Quality Guarantee

Neway is committed to providing zero defects valves to our customers and controls quality from order input, production process, final test to on-site service. Neway products obtained all major industrial qualifications including ISO9001, API 6A, API 6D, CE/PED, CU-TR, ASME N & NPT, TA-Luft, ABS, Norsok and fire safe, FE certificate, etc by our continuous efforts. Moreover, Neway has been approved as a qualified supplier by many world famous energy users. With its high-quality products and services, Neway has also been awarded the title of strategic supplier or "Best partner" by many customers.

